

NEXXT



Dear First Family!

It is a part of our culture. Days like today have defined His church and allowed us to be where we are. For generations, the faith family called First Baptist Church of Trussville has always taken the necessary steps so we can be ready for what He has in our future. Those steps of faith have rarely been simple or without reason to pause. That always occurs when we walk in faith.

Here we are again. Taking steps of faith in the face of uncertainty and doubt. Yet, we continue to fulfill Psalm 78:4 by “telling the next generation” about our God. We have an opportunity to see the unseen and watch God make it a reality. We can take these steps to prepare for the hundreds of families in new homes that are being built in Trussville, for people who have not yet walked in our doors, for space to park as our community arrives on campus, for experiences that will happen in the renovated chapel, for children that will experience Christ in their lives, and for a campus ready for whatever God wants to do in our presence. May those who come behind us see our faithfulness to answer His call once again!

Please join us! It will take all of us to reach our full potential. Read through the following pages and dream with us about what God wants to do. We truly are preparing to reach the next generation!

It is a joy to be on this journey with you.

Your Pastor,

A handwritten signature in black ink, appearing to read "Buddy", written in a cursive style.

NE  **XT**

TABLE OF CONTENTS

New Parking Lot	4
Chapel Renovations	6
Church Revitalization	8
Building B Elevator	10
Other Projects	12
- Covered Garage -	12
- Campus Improvements -	13
- Technology -	13
Campaign Giving Goals	14
Project Financial Breakdown	15
Frequently Asked Questions	16

NEW PARKING LOT

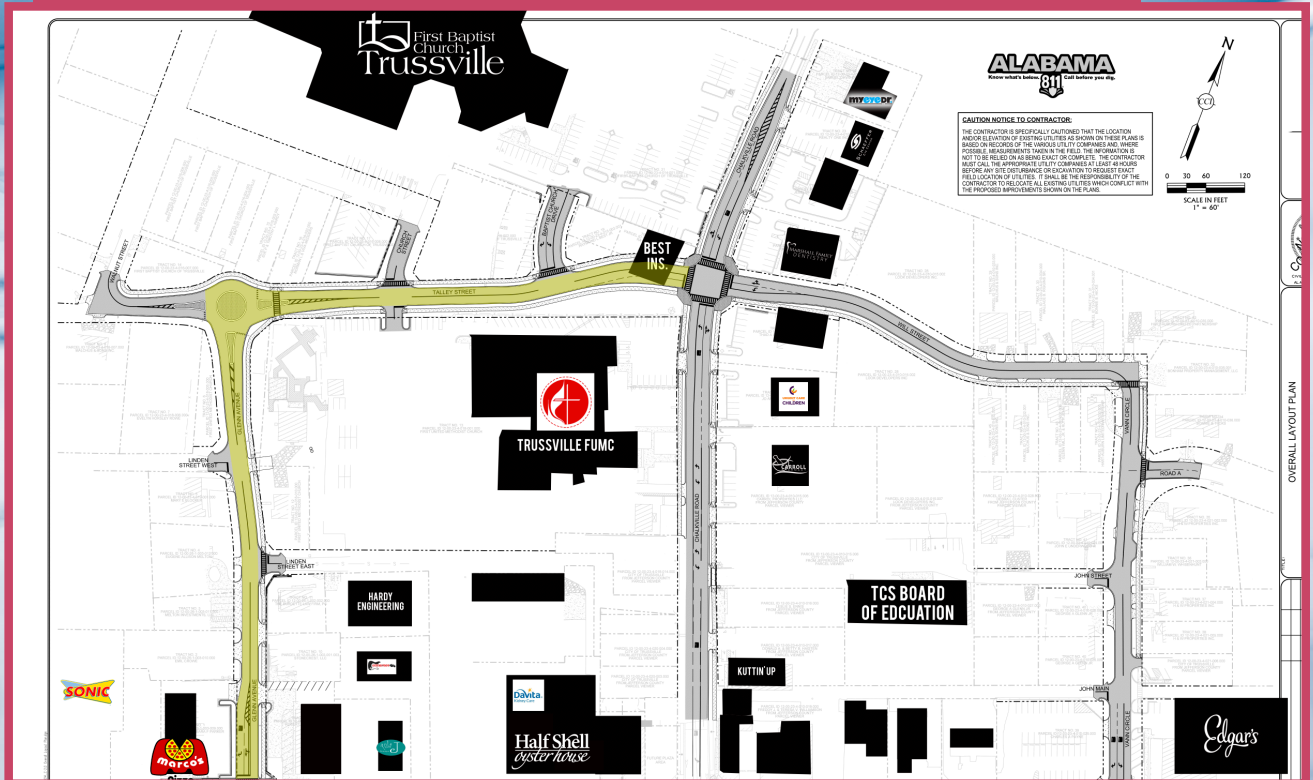
DEMO, NEW GRADING, PARKING & LANDSCAPE

The City of Trussville has a Loop Road project impacting many of our church-owned homes along the south side of our campus. In order to make this space flow more smoothly, account for the new roads running through our existing property, and to make the former Church of Christ lot useful, we will expand our parking lots. This will give us immediate access to Hwy 11, allow us to create a new church marquee, and improve the grading, landscaping, and lighting in this area.





LOOP ROAD PROJECT



CHAPEL RENOVATIONS

STAGE CONSTRUCTION, CARPET, PAINT, TECHNOLOGY, LIGHTING

This wonderful central space is still the hub of our campus. Often used for small weddings, memorial services, recitals, and times of teaching and worship, our Chapel plays a vital role in the life of church activity. But, this area has sat untouched for many years as the rest of the campus received improvement.



The original plan through our previous capital funds campaign (EPIC) was to revitalize this room, but based on projected pledges at that time we had to reprioritize our objectives and address this important area at a later time. Well, now is that time!

This area in the heart of our campus is in desperate need of tender love and care, and through NEXT that's what it will receive!





CHURCH REVITALIZATION

GIVING NEW LIFE TO A LOCAL FELLOWSHIP

In 2016 we made our five year goals to reach in 2021. One of the goals under missions was to establish a partnership with a local Baptist Church, use our resources to revitalize that fellowship, and together strengthen that church's future and direction.

We are continuing with that plan and investing in a local church. As part of this campaign, we will help renovate, remodel, staff, and begin a journey with a church to keep its kingdom effectiveness vibrant for its surrounding community.





BUILDING B ELEVATOR

PROVIDING ACCESS TO ALL AREAS AT FBCT, FOR EVERYONE



Baptism Sunday has become a beloved part of church life here. In fact, celebrating baptism following DNOW, Vacation Bible School, or any occasion where people of all ages make the decision to follow Christ is a major part of who we are.

However, for those with a disability, or simply difficulty navigating stairs, accessing our baptistry is more than challenging. But it's the same story for those needing to visit the Music Suite. Any members with difficulty climbing stairs are faced with 56 of them, round trip.

Plans for a new elevator to connect all three floors of Building B will solve this issue, once and for all. It will be a huge addition to our campus, but will also create ease of access that has been badly needed for some time.



NEW ELEVATOR SHAFT

OTHER PROJECTS

COVERED GARAGE SHELTER

CARING FOR OUR FBCT VEHICLES



Our buses, vans, and trailers age much faster when sitting out in the open elements. The ability to cover these vehicles correctly with adequate lighting and space to maneuver will make caring for these church assets possible.

This new structure will be an open-air garage, located behind the current storage facility off Hewitt Street. The new structure will provide needed shade and covering for maximum stewardship of our FBCT vehicles.



CAMPUS IMPROVEMENTS

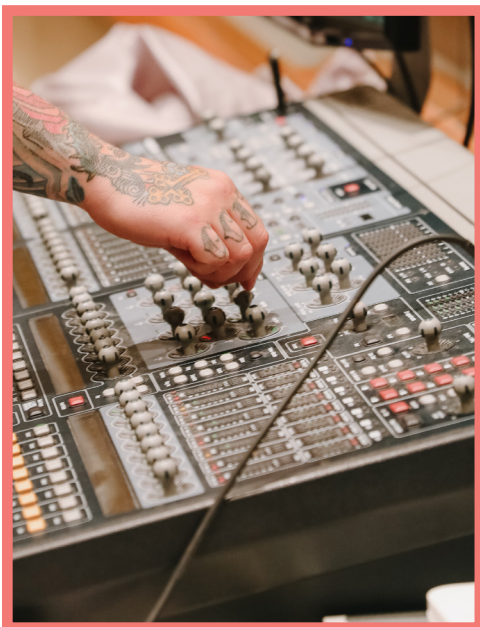
UPDATING AREAS THAT MAKE THE MOST IMPACT

From ceiling tiles, to outdated restrooms, to carpet and paint, our campus needs a little updating and freshening up. Our children put a lot of wear-and-tear on their areas in Building C, and we need to get these areas set for the next few years. There are bathrooms around campus that need better lighting and updating. Additional small group rooms need to be enlarged and made more multi-purposed. All of these together will make the flow of our campus more efficient and updated.



TECHNOLOGY

MAKING SURE THINGS WORK WHEN THEY ARE NEEDED



Technology will be a major focus for our campus for a long time. With this campaign we will replace our entire sound console that runs our worship center, as well as a second console that provides audio to those watching/listening at home.

We'll also add security cameras in our parking lots and interior rooms, and several new HVAC controllers to ensure that our campus remains comfortable all year long.

CAMPAIGN GIVING GOALS

Giving Dollar Ranges	Number of Gifts Given Within Range	Pledges
\$1,000-4,999	430	\$430,000
\$5,000-9,999	135	\$675,000
\$10,000-19,999	45	\$450,000
\$20,000-\$29,999	35	\$700,000
\$30,000-39,999	5	\$150,000
\$40,000-49,999	5	\$200,000
\$50,000-74,999	5	\$250,000
\$75,000-99,999	4	\$300,000
\$100,000-249,999	3	\$300,000
\$250,000-499,999	2	\$500,000
\$500,000	1	\$500,000
Total	670	\$4,455,000

NEXXT

PROJECT FINANCIAL BREAKDOWN

Parking Lot Upgrades, Connections with New Loop Road \$1,835,000

These monies will work alongside the city's new Loop Road construction to create new parking lots, lighting and landscape, as well as entrances and exits for traffic flow to Hwy 11, and property acquisition.

Building Renovations, Improvements and Upgraded Technology \$1,295,000

This includes the dedicated elevator for Building B, updated and improved Chapel work to make the daily use of this room multipurpose, numerous technology upgrades across campus from the Sanctuary, Fellowship Hall and our building HVAC system, and improvements and renovations to the Children's Ministry floors in Building C. It also encompasses additions to the garage to help with vehicle maintenance.

Church Revitalization \$500,000

The opportunity to partner with a sister church, revitalizing their campus and reaching their neighborhood will offer another strong lighthouse in our community to continue Kingdom work for years to come.

Total Project Cost: \$3,630,000

Debt Reduction

Aggressively reducing our current debt remains an intentional goal for this campaign. Any remaining money from this campaign will go to minimize this commitment.

FREQUENTLY ASKED QUESTIONS

NOW?

Yes, this campaign was originally scheduled for March 2020 but our world entered into the COVID situation and we tabled this promotion until we were all back together.

DOES THE CURRENT ECONOMY AFFECT THIS PROJECT?

The economic situation around the world always plays a part on a stewardship project. We will adjust the construction timeline within the campaign schedule in order to get the best price for each segment of the plan.

WHEN WILL THIS START?

Sunday, May 1 will be the first day of this building campaign.

HOW CAN I BE A PART OF THIS?

1. With a one-time cash offering on Commitment Sunday
2. Through pledges paid over a three year period
3. By giving anytime throughout the three year campaign

DO I REDIRECT MY REGULAR GIVING TO THE PROJECT?

No. A campaign like this involves giving above and beyond your regular tithes and offerings. Many will commit to sacrificially give to this project.

WILL THIS ADD TO OUR CURRENT DEBT WITH THIS CAMPAIGN?

No. This campaign will not incur any long-term debt and at the same time fulfill a goal to pay down on our current debt service.

WHERE IS MISSION GIVING IN HERE?

The church revitalization portion of this project broadens our missions efforts exponentially but also helps accomplish our previous goals for 2021.

WHAT IS COMMITMENT SUNDAY?

May 1st is Commitment Sunday for this project. On that Sunday, during each morning service, everyone will have an opportunity to physically bring their pledge card and/or their one time cash offering forward so that we can corporately pray over this project.

WHAT IF I CAN'T BE PRESENT ON COMMITMENT SUNDAY?

If you can't attend on the May 1st Commitment Sunday, you can mail your commitment pledge or cash offering to church to add to our total or use the QR Code at right to submit your pledge electronically.



WHEN DOES WORK BEGIN ON THIS PROJECT?

Some work will begin immediately using funds already given to the building fund.

SCHEDULE

NEXXT

KICK-OFF

March 13

COMMITMENT SUNDAY

May 1

CELEBRATION SUNDAY

May 15



We will tell the next generation.

Psalm 78:4